

USER MANUAL



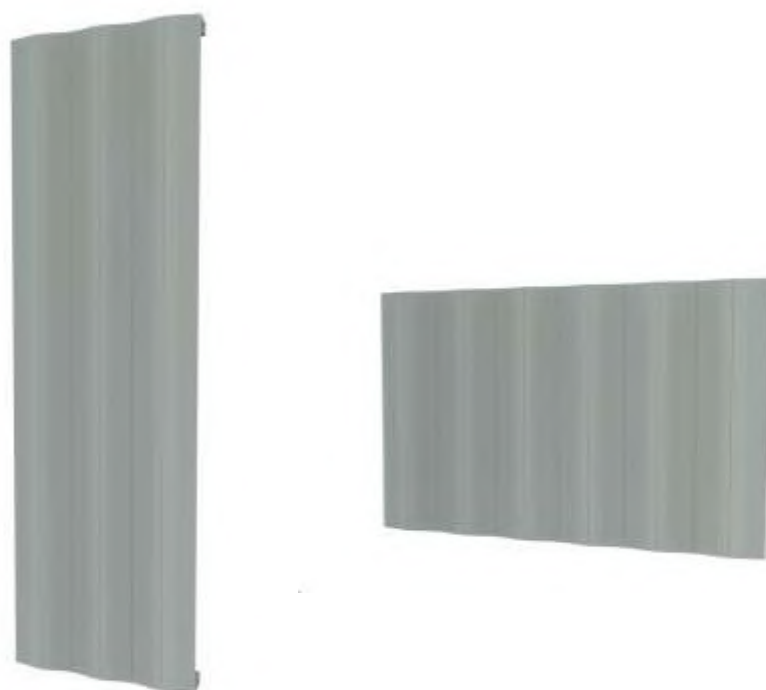
Thank you for choosing Better Bathrooms.
Please read this manual before installing your product
and keep for future reference.

better 
bathrooms

Elbrus Beige Wave Vertical Radiator

ELB1600

ELBH600



- **Single-person assembly**
- **Tools required**
- **We always recommend using professional tradespeople to install your product**

V1_17.12.24

Congratulations on your purchase

And welcome to our growing gang of savvy shoppers

We're on a mission to bring you extraordinary bathroom products, for less. From modern to traditional style ceramics, plus the gorgeous fixtures, fittings and furniture to match. So, you can fall in love with your space every single day.

As one of the UK's largest independent bathroom stores, we've received countless awards; including the National Business Awards UK, the Digital Entrepreneur Awards and being placed on The Sunday Times Fast Track 100.

We hope your new product goes above and beyond your expectations. However, should any problems occur, please:

- Call our friendly UK call centre on **0330 390 3062** (9am-7pm Monday to Friday, or 10am-4pm Saturday and Sunday), or
- Send us a message via customerservices@buyitdirect.co.uk

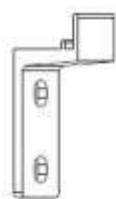
Important information

- Please read these instructions thoroughly and retain for future reference
- Manufactured to BS EN 442-1 Radiators
- Do not throw away packaging until you have located and confirmed that you have all included parts.
- Inspect the finish on the product prior to installation, any damage reported after installation will not be covered.
- The provided fixings are for solid brick walls only, if installing on any other surface please check that it will safely support the product and purchase suitable fixings.
- The pipework must be flushed out to remove any debris which can affect the function of this product.

BTU and Wattage info-

Product Code	BTU	Wattage
ELB1600	3283	962
EBLH600	2915	854

Parts



Brackets
X4



Long Screw
X8



Masonry Wall Plug
X8



Plastic screw caps
X8



Airvent
X1



Blanking plug
X1



O-ring
X2

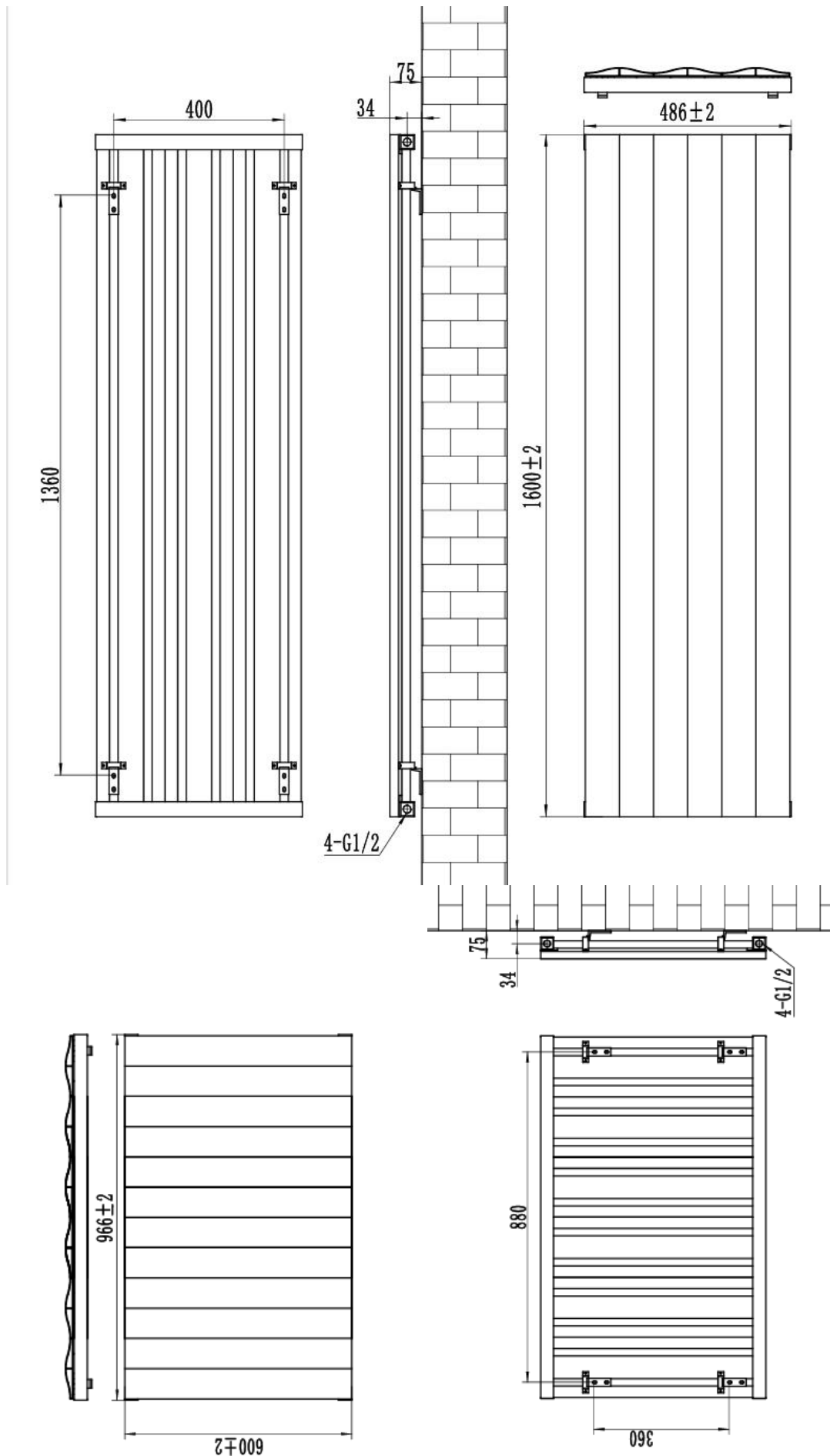


Plastic plug
X2

Please note that parts are for illustrative purposes only and may differ slightly to the actual product

Technical Drawing

ELB1600



ELBH600

Tools Required

For your own protection we recommend that you wear safety boots and gloves.

Spanner

Flathead screwdriver

Phillips screwdriver

Tape measure

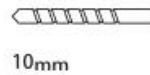
Drill

Spirit level

Pencil

Sealing tape

Tools required for installing:



Installation

Please note: Before starting any installation, turn off the water supply.

Please note: Before commencing any installation, the desired location should be checked before drilling, so that no pipes or wires can be damaged

A fully qualified and competent person should install this product.

This towel rail can only be used with water pressure of less than PN 0.8MPa (8g/cm², 8Bar) and water temperature below 100 °C.

If the temperature exceeds 48 °C please show a warning sign near the product to avoid burning and scolding accidents

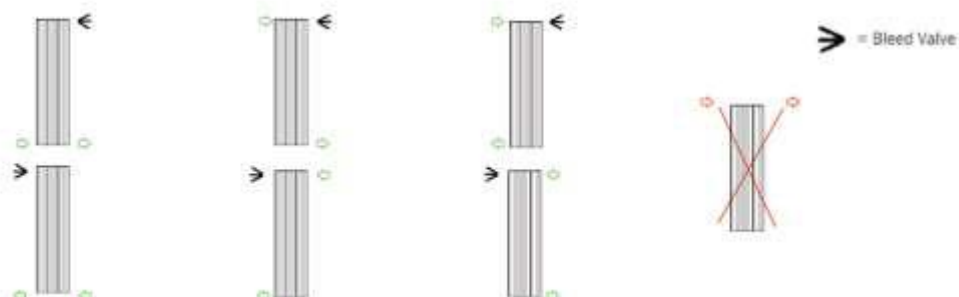
The product is only suitable for use on indirect or sealed central heating systems including combination boilers.

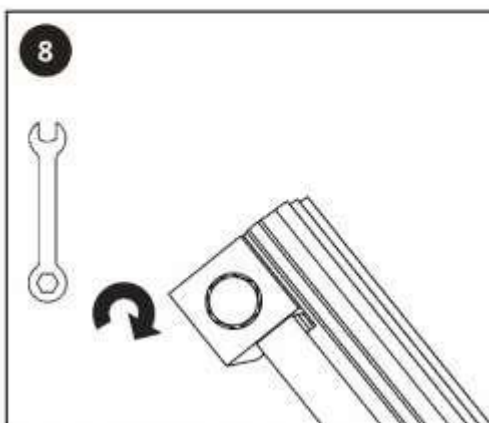
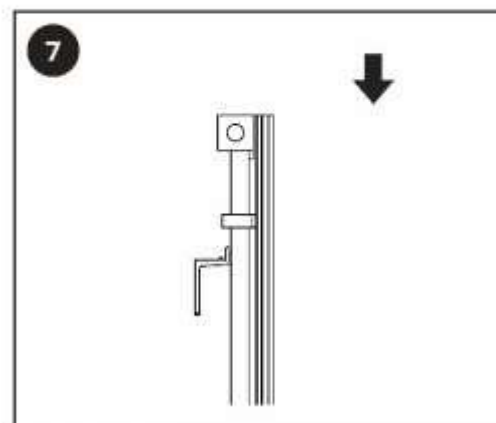
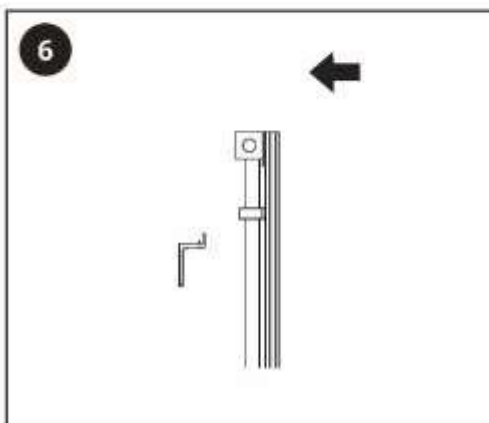
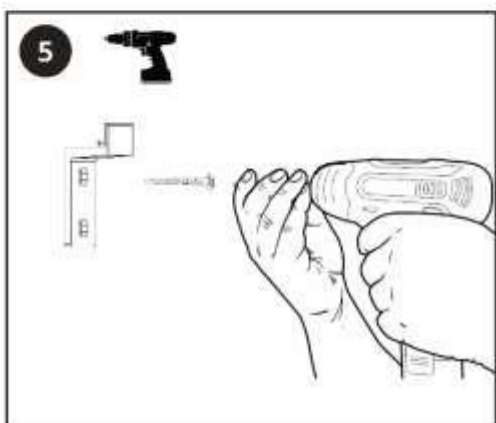
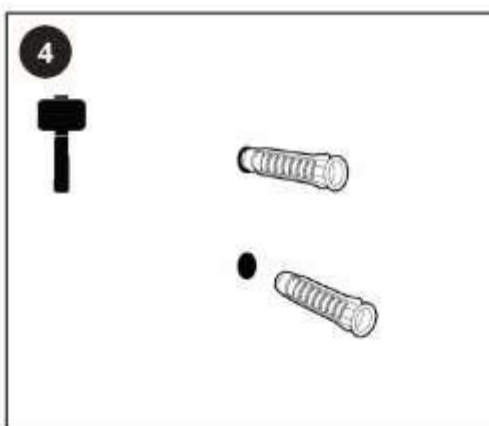
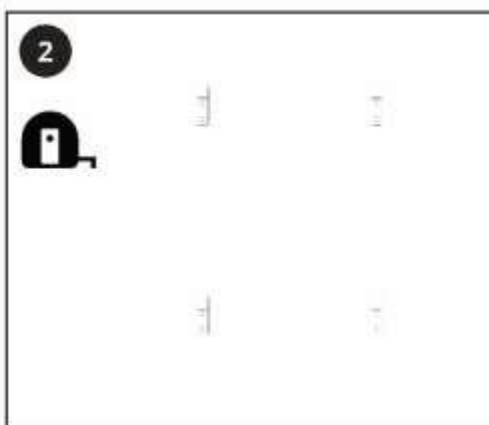
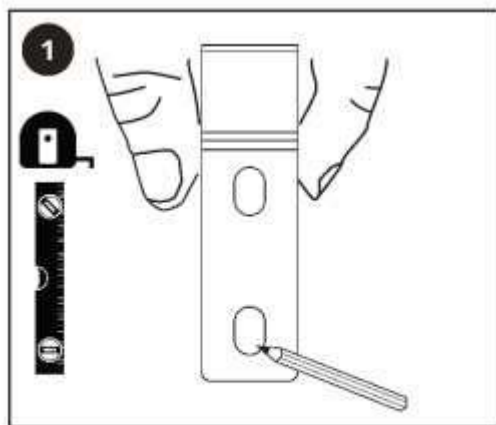
To ensure you can enjoy your radiator for as long as possible, it is essential you first **FLUSH YOUR HEATING SYSTEM WITH A CENTRAL HEATING CLEANSER**, this will clear any waste from the system. Following the cleanings of the system you must **PROTECT THE SYSTEM WITH A CENTRAL HEATING INHIBITOR**. These two simple steps will greatly increase the efficiency and lifespan of your central heating system. Failure to complete these steps increases the chance of pinhole leaks, and will also invalidate the guarantee on your radiator.

Installation Instructions

Valve installation advice :

Please ensure that your radiator valves are fitted as per the below diagrams ensuring that a bleed point always remains at the top of the unit. If connecting both feeds to the bottom it is recommended that a baffle is used.





- 1) Decide positions to install
- 2) Positioning brackets on the wall
- 3) Drill holes on the wall
- 4) Put plastic wall plugs into holes
- 5) Fix the brackets on the wall
- 6/7 Hang the product on the brackets

Finally, fit the radiator valves to the pipework and connect to the radiator valve tail and tighten all connections.

After installation

- After the above installation, turn on the water supply and using the flathead screwdriver, open the air vent via the central screw, open the inlet valve and let the water rush into the radiator. Check all connections for leaks.
- Once water overflows from the air vent, this means that there will be no air bubbles present.
- Use a screwdriver to close the air vent and then the radiator is ready to use

Care Instructions

This radiator is made from aluminium with powder coating finish. To maintain the surface of your product (especially when subjected to steam or splashes), wipe with a clean damp cloth and wipe dry.

Do not use abrasive cleaning agents or materials which can strip and scratch the surface; the use of these agents or materials can invalidate your guarantee.

It is recommended to wipe and dry on a regular basis.

For more information

- visit betterbathrooms.com
- email customerservices@buyitdirect.co.uk
- call 0330 390 3062
- write to Trident Business Park, Neptune Way, Huddersfield, HD2 1UA

**better
bathrooms** 

Part of the BuyItDirect Group